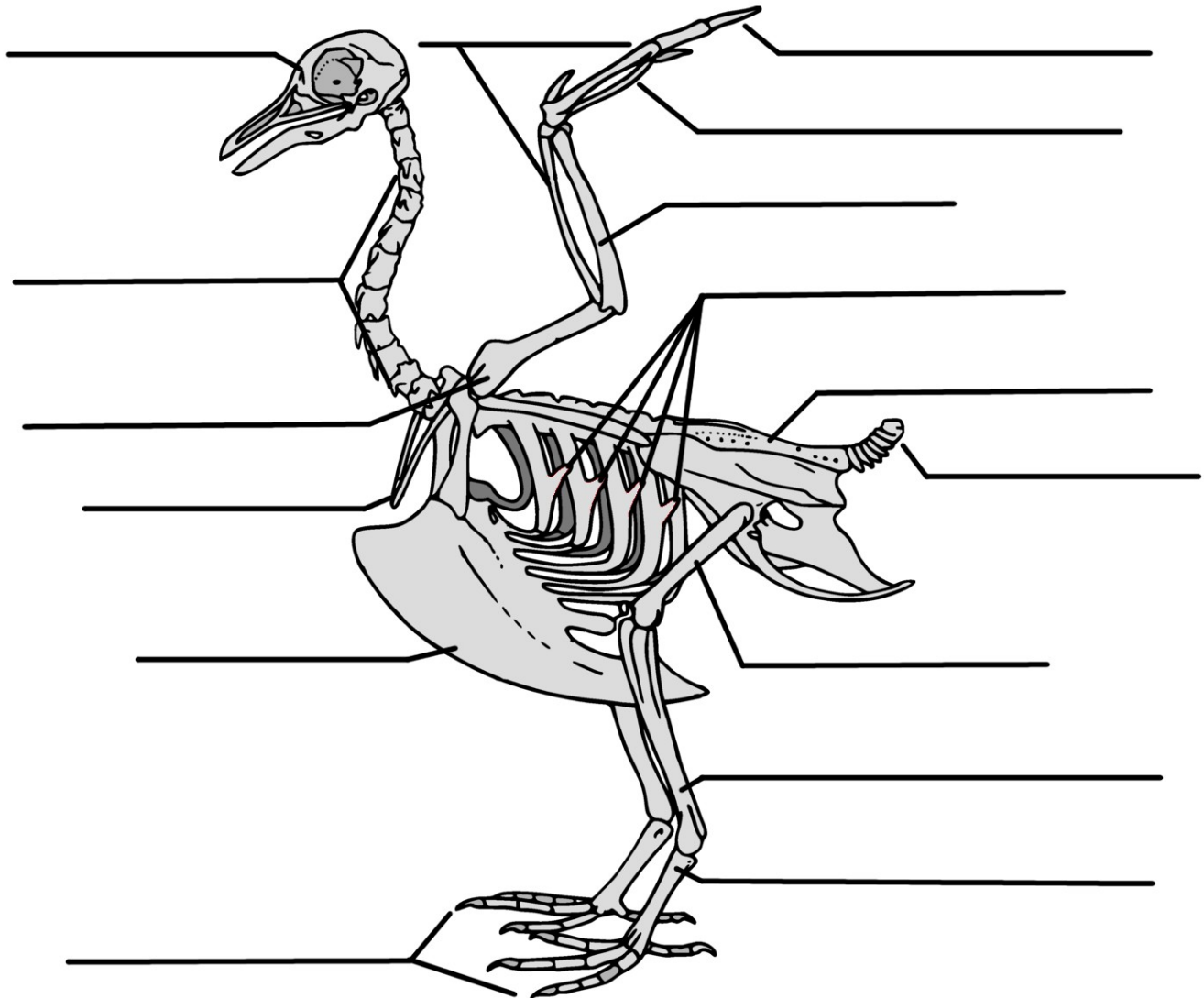


# Ornithology - Skeleton Study

Birds have many specialized skeletal structures, but they also have multiple bones that correspond directly to bones in the human skeleton. Label the avian skeleton below. Which bones and structures are different than human ones? Which are the same?



**Word Bank:**

- |                 |                    |                    |                      |
|-----------------|--------------------|--------------------|----------------------|
| carpometacarpus | cervical vertebrae | cranium            | femur                |
| furcula         | humerus            | keel               | phalanges (2 places) |
| pygostyle       | radius             | synsacrum          | tarsusmetatarsus     |
| tibiotarsus     | ulna               | uncinate processes |                      |

# Skeleton Study - Key

